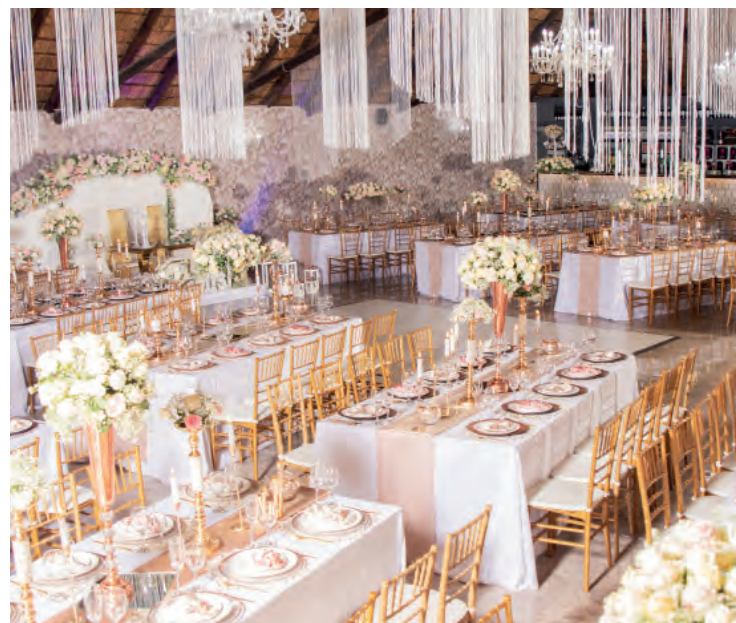




THE GARDEN VENUE

WEDDINGS

2023 WEDDING GUIDE





WELCOME

I'M PROUD TO PRESENT THE GARDEN VENUE'S 2023 WEDDING GUIDE.

Year after year, we go above and beyond to achieve remarkable results. Thanks to both our dedicated, passionate team and our wedding clients' superb support, we managed to succeed. In the last 12 months, we have hosted a total of 286 memorable weddings across our 5 venues.

It is also important to keep evolving. Not long ago, we breathed new life into our venues with significant upgrades and renovations including new koi ponds, bar lounges, marble floors and additional bedroom suites for wedding guests.

We are proudly recognised as one of the finest wedding venues with:

- 5 Wedding Halls
- 4 Gorgeous Outdoor Garden Chapels
- 22 Stunning Hotel Bedrooms and Honeymoon Suites.

Set across 3 hectares, only minutes from the Northgate Dome, we enjoy an authentic country feel. Upon arrival it is undeniable that the most distinctive feature of our award-winning venue is our lovely landscaped gardens – idyllic, meticulously maintained spaces adorned with

captivating water features. The Garden Venue's ability to bring the beauty of nature inside really differentiates us from other establishments.

Three of our event halls embrace a traditional thatch design, exuding a sophisticated and warm character, while 2 are loved for their contemporary, minimalist style. Regardless of their architecture, all these spaces are surrounded by magnificent greenery, punctuated by multiple water accents.

These incredible venues can host celebrations ranging from 10 to 450 guests per wedding. Accompanying the multiple reception and ceremony spaces are a range of services and packages, including catering and décor. Our team of wedding coordinators can present personalised solutions for an expertly coordinated, magical day.

Time after time, first-time visitors are at a loss for words, which is why we encourage you to visit and take it all in for yourself. I promise, you won't be disappointed!



Harold Horn
MANAGING DIRECTOR



THE GARDEN VENUE A PICTURE-PERFECT PLACE TO HOST YOUR WEDDING.

We are proud to offer 5 exceptional wedding venues, catering for both intimate and large weddings. Each venue is uniquely situated on our property to present its own private wedding day story. During your visit, you can choose the chapel and reception space that best resemble your dream wedding.

Couples who wish to have the entire grounds for themselves may also enquire about this exclusive option.

AS A LEADING WEDDING VENUE, WE OFFER FULL WEDDING PACKAGES, INCLUDING:

- Venue
- Catering & Beverages
 - Décor & Flowers
 - Waiters & Bartenders
- Music, Audio Visual Equipment, DJ & Sound System
 - Accommodation





My Name is Thenjiwe Horn and I am proud to represent my team of passionate and professional wedding coordinators.

Together, we continually conjure up inspiring ideas, design clever strategies and implement innovative plans – all while following the necessary steps to ensure dreamlike nuptials hosted at our venue unfold as envisioned.

The Garden Venue team is a tightly-knit family from diverse backgrounds, with years of wedding and hospitality experience behind us. We have the capacity, flexibility and expertise to create a memorable day that meets all your requirements.




WEDDING COORDINATORS WITH A DIFFERENCE.

Your wedding coordinator can assist with the following:

- Selection of the Most Appropriate Venue
- Menu Selection & Refinement
- Beverage Selection, including Food & Wine Pairing
- Accommodation & Transfers for Guests
- Room & Table Décor and Themes
- Entertainment & Music Recommendations
- Flowers
- Wedding Cake Recommendations
- Wedding Programme
- Photographer
- Minister

We have two payment plans:

1. 10% deposit payment to secure the date and the venue. Thereafter, equal monthly instalments with the final payment required 30 days before your big day.
2. 50% deposit payment of the total amount to secure the date and the venue. Thereafter the outstanding balance will be required 30 days before your big day.



We offer a full complement of staff. Your experience starts with a sales consultant and then you are allocated a senior wedding coordinator who will look after you from the beginning of your planning process to the end of the wedding. A second coordinator is also allocated who will manage all the practical responsibilities including coordinating our waiters, bartenders and cleaners on the day.

We also offer a complimentary, romantic one-night stay with dinner to celebrate your one-year anniversary.

Your wedding is important to us, no matter how big or how small. We are here to help you make your special day as exquisite as possible, so please feel free to contact us for a wedding consultation.



Thenjiwe Horn
WEDDINGS DIRECTOR





THE FOLLOWING ARE AUTOMATICALLY INCLUDED UNDER OUR VENUE HIRE:

Hotel Accommodation	Reception Banquet Hall	Garden Ceremony Chapel
<ul style="list-style-type: none"> • Complimentary Honeymoon Suite • Complimentary Change Room • Complimentary Bottle of Sparkling Wine / MCC in the Honeymoon Suite • Complimentary Bottle of Sparkling Wine / MCC in the Change Room • Complimentary Platter for the Honeymoon Suite • Complimentary Platter for the Change Room • Breakfast for the Bride & Groom the Next Morning After the Wedding • Complimentary Change Room Can Be Gifted to a Loved One for Use and includes Breakfast 	<ul style="list-style-type: none"> • Cutlery • Glasses • Napkins • Crockery • Tablecloths • Gold Tiffany Chairs • Round or Rectangular Venue Tables 	<ul style="list-style-type: none"> • Red or White Carpet for the Ceremony Aisle • Gold Tiffany Chairs (From the Hall) • Petals for the Aisle and for Confetti • Two Plinths with Flowers at the Ceremony Area • Podium • Signing Register Table





WEDDING VENUES

Each wedding typically consists of an elaborate and well-orchestrated 3-part event.

- Wedding Ceremony
- Canapés and Welcome Drinks
- Wedding Reception Banquet

As such, we at The Garden Venue, have designed our wedding spaces to allow for the optimal expression of each of these fundamental wedding components.

RECEPTION BANQUET HALLS

Choose from 5 elegant banquets halls:

The Garden Arena Hall | Seats 150 to 450 Guests

The Forest Banquet Hall | Seats 150 to 350 Guests

The Elephant Banquet Hall | Seats 80 to 140 Guests

The Olive Tree Hide | Seats 50 to 80 Guests

The Peacock Room | Seats 30 to 60 Guests

GARDEN CEREMONY CHAPELS

Each banquet hall seamlessly twins with a wedding ceremony space:

The Garden Arena Cascades Pavilion

The Forest Lily Pond Amphitheatre Chapel

The Koi Pond Pavilion

The Lawn Terrace Chapel

ARRIVAL CANAPES & DRINKS SPACE

While the bridal couple are taking photos in our gardens, the wedding guests may enjoy canapés and welcome drinks:

The Garden Arena Bar

The Forest Piazza

The Elephant Boma & Decks

The Pot Cascade

The Weir Cascades





THE GARDEN ARENA

CAPACITY: 150 TO 450 GUESTS – IN A BEDOUIN TENT OR MARQUEE
OR
CAPACITY: 150 TO 280 GUESTS – IN THE GARDEN ARENA HALL

Punctuated by 3 Spaces:

- The Garden Arena Hall • The Garden Arena Bar • The Garden Arena Cascades Chapel



The Garden Arena Venue is our largest wedding venue. Set in a grand, beautifully landscaped garden, it is ideal for those who are planning a big wedding.

Three distinct landmarks punctuate The Garden Arena. On the far end we have The Garden Arena Hall, then The Garden Arena Cascades Chapel cantilevering over a koi pond and lastly the outdoor Garden Arena Bar. All three spaces fit together seamlessly, allowing for welcome drinks and canapés, the ceremony on a stage over the koi ponds and the reception in the banquet hall.

Steel architectural accents exude a contemporary, minimalist feel, in contrast to our other venues that boast a traditional thatch style.

The highlight, of course, is the verdant scenery and cascading ponds. The informal gardens display a striking abundance of palms and lush tropical plants, juxtaposing the modern buildings. A series of dramatic pot cascades salute the

arrival area where guests are welcomed, while raised berms make the space uniquely private.

The one-of-a-kind outdoor chapel allows for a spectacular outdoor ceremony. Steady flowing water features animate the left and right of the stage which seems to float above the water, all enveloped by the green landscape. To reach the stage, the bridal party walks over the bridge that crosses the water surrounding the stage.

At the far end of The Garden Arena sits the covered bar. With plenty of rolling lawn in between, your special occasion is given a blank canvas – the sky is the limit. Bridal couples may choose to hold their wedding in The Arena Hall or beneath the open skies in a marquee or Bedouin tent. A highly versatile space, it allows for almost any storyline to play out.

With its light-grey colour palette and stylish edge, this sumptuous event space with sprawling lawns can host large weddings, accommodating anything from 140 to 450 guests, banquet style.





THE FOREST HALL

CAPACITY: 150 TO 350 GUESTS

Punctuated by 3 spaces:

• Forest Banquet Hall • Forest Piazza • Lily Pond Forest Chapel Amphitheatre



This phenomenal venue, nestled below towering trees with expansive rolling lawns, lends itself perfectly to the chemistry required for a fairy-tale wedding.

Our Forest Banquet Hall consists of three spaces. While ceremonies can be held amongst the tall trees of the Lily Pond Forest Chapel Amphitheatre, pre-reception drinks and canapés can be relished on The Forest Piazza and sumptuous banquets can be hosted inside The Forest Banquet Hall with its noteworthy high thatch roof.

The Lily Pond Pavilion is a seemingly floating room set on and adjacent to the largest of our ponds. The covered pavilion cantilevers over the water and is accessed by walking across a six-metre-long wooden bridge. The walkway to the ceremony area is utterly majestic. A broad wooden deck at the top of the hill descends to the ponds, drawing all eyes to the bride. Captivating rock pool features flank the left and right of the stage, framed by an abundance of palms and tropical plants.

This inspiring outdoor space has an amphitheatre-style design with three terraces to facilitate viewing. With a eucalyptus forest backdrop, The Forest Lily Pond Pavilion is a breathtaking chapel.

While the Lily Pond Pavilion with its garden amphitheatre can seat up to 500 guests cinema style, the Forest Banquet hall can accommodate from 150 to 350 guests, banquet style.



THE ELEPHANT HALL

CAPACITY: 80 TO 140 GUESTS

Punctuated by 3 spaces:

- The Elephant Hall
- The Elephant Boma
- The Koi Pond Pavilion



The Elephant Hall, trumpeting loudly as The Garden Venue's very first wedding hall, was recently refurbished and upgraded.

With all its sentimentality intact, the architecture and light marble tiled floors delight in a neutral colour palette, ensuring The Elephant Hall is sufficiently versatile for any wedding style. It is light and airy with large windows enjoying magnificent garden and pond views. In addition, the space has been redefined with a modern bar area and a separate banqueting service station.

It can cater for up to 140 guests under roof, banquet style.

Guests who use The Elephant Hall typically host their ceremonies on the extraordinary Koi Pond Pavilion, adjacent to the hall.

The exquisite outdoor space with decking pavilions, cantilevered over the koi ponds where schools of gold and orange Japanese koi fish add an exotic touch to this already remarkable space – the ultimate venue for unforgettable weddings.

During the ceremony, guests are seated on decks surrounding the ponds with all eyes on the bride as she makes her way down the stairs and walks over the boardwalk to meet her partner. A lush landscape with tropical palms and indigenous trees surround The Koi Pond Pavilion.

While welcome drinks and canapés can be savoured here, many couples choose the intimate Elephant Boma below the hall for serving beverages and appetiser while the bridal party takes photos in the designer gardens.





THE OLIVE TREE HIDE

CAPACITY: 50 TO 80 GUESTS

Punctuated by 3 spaces:

• The Olive Tree Hide • The Lawn Terrace Chapel • The Pot Cascade

The Olive Tree Hide is a thatch hall in an enviable position, nestled under a grand old indigenous olive tree which seems to be growing out of ancient rock boulders. Typical of a hide in the bush, this wedding venue is private and tucked away, blending seamlessly with its surroundings.

A meandering pathway leads through the trees to a rock cascade and raised wooden deck. The magical and intimate venue at the far end of The Lawn Terrace can cater for up to 80 guests, banquet style.

Our Olive Tree Hide was expanded and refurbished. A separate bar lounge area and an impressive serving station now punctuate this glamorous venue, complete with marble tiles. Giant glass windows lend a captivating view of the rich foliage below the olive tree canopy, while the hippo rock cascade lulls the senses with gently flowing streams. Welcome drinks and canapés can be served adjacent to The Pot Cascade at the entrance of this captivating venue.

The entire hall is surrounded with an abundance of plants, making for a magical setting.

The Lawn Terrace Chapel sits at the far end of The Olive Tree hide by a robust and majestic Paperbark Tree, a quintessential African tree is ideal for intimate ceremonies. This outdoor chapel – with its sandstone tiles and planter boxes filled with formal lollipops and iceberg roses – is dramatic indeed! Pot cascades frame the left and right of the stage and the branch canopy of the Paperbark Tree forms the ceiling. If you are looking for a stirring garden wedding, then look no further!

Rolling lawns and immaculately landscaped gardens make this beautiful space truly memorable and at the right time of the year the jacaranda tree in the middle of The Lawn Terrace scatters an innumerable amount of glorious purple-blue flowers.





THE PEACOCK ROOM

CAPACITY: 30 TO 60 GUESTS

Punctuated by 3 Spaces:

- The Peacock Room • The Lawn Terrace Chapel • The Weir Cascade



As several prides of peacocks roam The Garden Venue, we have always wanted to name a room after these glamorous birds with their iridescent blue and green tail feathers. We were proud to open up our latest wedding venue – The Peacock Room, in honour of these regal birds that have made our establishment their home. The Peacock Room saw the addition of a new bar lounge extension with marble floors throughout.

Being our smallest venue, it accommodates more intimate weddings, seating 30 to 60 guests banquet style. Its contemporary architecture distinctly contrasts the dominant traditional thatch that typifies The Garden Venue. The interior is airy and light with neutral colour palettes, allowing the function space to effortlessly transform in line with your desired décor.

The room is an ideal wedding venue, punctuated by a mosaic buffet serving station. As always, it is all about the gardens and as such tall windows frame the sublime views over The Lawn Terrace. Welcome drinks and canapés are typically served at the entrance of The Weir Cascade, flowing with a drumming welcome.

As mentioned previously, The Lawn Terrace Chapel is blessed with the presence of a stately Paperbark Tree, and is ideal for intimate ceremonies. This outdoor chapel – with sandstone tiles and planter boxes filled with formal lollipops and iceberg roses – is divine indeed! Pot cascades frame the left and right of the stage and the branch canopy of the paperbark thorn forms the ceiling.





WEDDING DECOR & FLOWER PACKAGES

Our experienced wedding coordinators can assist with your wedding décor and flowers.

Décor plays a major role on your wedding day – from a bold pop of colour to a serious statement that touches everything, or something more minimalist and understated with a golden thread that ties it all together. Think sentimental colour palettes that extend beyond the standard narrative, inventive themes that reflect your unique love story... and so much more.

We pride ourselves on our wide and varied range of beautiful décor items to choose from which we update and curate with current trends in mind.

Choose from Three Themed Table & Flower Décor Packages:

- Classic Décor & Flower Package
- Deluxe Décor & Flower Package
- Platinum Décor & Flower Package

Classic Décor & Flower Package Per Table	Deluxe Décor & Flower Package Per Table	Platinum Décor & Flower Package Per Table
<ul style="list-style-type: none"> • 1 X Large Flower Arrangement • 1 X Centrepiece 	<ul style="list-style-type: none"> • 1 X Large Flower Arrangement • 1 X Centrepiece • 2 X Small Flower Arrangements • 2 X White Candles and Candle Holders • Deluxe Silver/Gold Cutlery 	<ul style="list-style-type: none"> • 1 X Large Flower Arrangement • 1 X Large Centrepiece • 4 X Small Flower Arrangements • 4 Coloured Candles and Candle Holders • Exclusive Colour-coded Cutlery (Double Set) • Exclusive Underplate & Ornate Napkin Ring Selection • Exclusive Gold Rimmed Plates • Exclusive Colour Coded Glasses

All 3 Packages Also include the Following per Table:

- Tiffany Chairs (Gold or White) • Rectangular or Round Tables (10-Seater) • Set of Silver Cutlery • Sparkling Wine / MCC & Wine Glasses
- Decorative Underplates & Continental Plates • Tableclothes, Runners & Napkins

Bridal Main Table

Bridal Main Tables are decorated in accordance with the décor & flower package chosen. In addition, it includes a glass table together with His & Her chairs flanked on either side with dramatic flower plinths.





WEDDING CATERING PACKAGES

There are several exceptional menus to choose from, all created by our in-house chef. Each features dishes set to delight your senses and impress your guests. Our delectable canapés and refreshing arrival drinks are arguably the best way to start your special day. For mains, many couples opt for the Ruby, Emerald or Diamond Buffet, designed with wedding flavours in mind.

We also design bespoke menus to satisfy unique culinary wishes, dietary requirements, or both. Meeting with our Head Chef to discuss your menu choices is highly recommended and food tastings can be arranged. Our full menu selection with menu selectors is available on request. Here are some of our wedding menu options.

Ruby Wedding Buffet	Emerald Wedding Buffet	Diamond Wedding Buffet
<ul style="list-style-type: none"> • 1 Plated Starter • Breadbasket • 2 Garden Salads • 2 Main Meats • 2 Starches • 2 Vegetables • 2 Desserts • Coffee & Tea Station 	<ul style="list-style-type: none"> • Pre-reception Canapés & Welcome Drinks • 1 Plated Starter • Breadbasket • 3 Garden Salads • 3 Main Meats • 2 Starches • 2 Vegetables • 3 Desserts • Coffee & Tea Station 	<ul style="list-style-type: none"> • Butler Style Canapés & Welcome Drinks • 1 Plated Starter • Breadbasket • 4 Garden Salads • 4 Main Meats • 2 Starches • 3 Vegetables • Dessert Avalanche • Coffee & Tea Station

We also offer:

- Breakfast & Brunch Wedding Buffet • Halaal Wedding Menu • Kosher Wedding Menu
- Traditional Vegetarian Hindu Wedding Menu • West African Wedding Menu

For most couples, the wedding cake is an important aspect of the wedding. At The Garden Venue, we offer a splendid range of decadent wedding cakes to choose from.

All wedding functions enjoy a full beverage service, including both alcoholic and non-alcoholic drinks. A wide selection of wines, spirits, beers, ciders and liqueurs are stocked. Your wedding coordinator can assist you with a personalised drinks menu, including:

- Selection of Welcome Drinks • Sparkling Wine / MCC for Toasting • Cocktails and Shooters • Food and Wine Pairing





BOUTIQUE WEDDING HOTEL

In a tranquil setting with fantastic garden views, the exclusive rooms combine classic style with contemporary flair. Being a boutique hotel, each room enjoys a different design element.

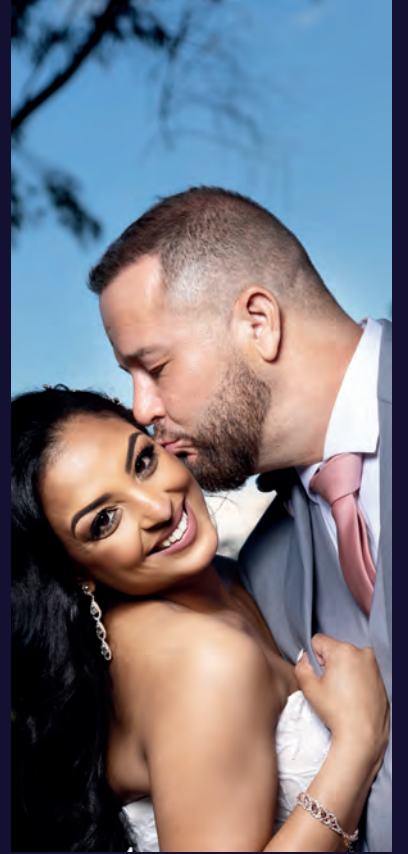
Double and single en suite rooms are available. Guests can choose between either a deluxe or standard room with king, queen and twin bed options. Beyond our standard and deluxe rooms, we also have five honeymoon suites.

Accommodation at The Garden Venue is very sought-after, so we recommend block booking in order to secure suites and rooms for the bridal party and guests travelling from afar.

The sumptuous English and continental breakfast presented daily by our chefs are not to be missed. Wi-Fi is complimentary and all rooms include coffee stations.

Airport transfers are available on request.





THE GARDEN VENUE

WEDDINGS

308 Boundary Road, North Riding AH, Randburg, 2169 | info@thegardenvenue.co.za | +27 (0)11 795 0000

www.thegardenvenue.co.za



WEDDINGS | CORPORATE EVENTS | PARTIES | HOTEL