



THE GARDEN VENUE

CORPORATE EVENTS

2023 CORPORATE EVENTS GUIDE





WELCOME

**I'M PROUD TO PRESENT THE
GARDEN VENUE'S 2023
CORPORATE EVENTS GUIDE.**

The Garden Venue is a leading corporate events venue set in beautifully landscaped gardens in North Riding, Randburg, in close proximity to the Northgate Dome. It is the perfect location close to major business hubs in Sandton, Fourways, Randburg and surrounding areas.

Spread across 3 hectares of manicured gardens, we enjoy an authentic country feel. Multiple unique conference and meeting rooms, banquet halls and event spaces can accommodate guest numbers from 10 to 450 per occasion.

Offering freedom of choice, our event venue options are ideal for conferences, seminars, team-building programmes and parties, including year-end functions.

We have 12 event venues to choose from. Whether you choose The Olive Tree Hide nestled under a cluster of ancient trees or The Lily Pond Pavilion or The Garden Arena, you are bound to have a successful, memorable event. Be it an international conference or a small meeting you are planning, we have the capacity, flexibility and expertise to create a professional event that meets all your requirements.

Our corporate team is a tightly-knit family from diverse backgrounds with years of hospitality experience and a passion for events. Make an appointment to meet us. We would love to show you around.



Harold Horn

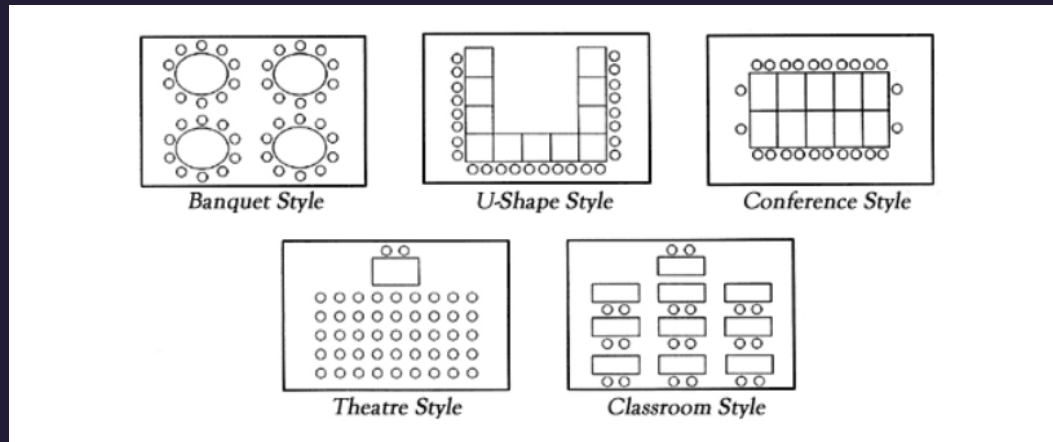
MANAGING DIRECTOR



CONFERENCES & SEMINARS

Having worked in the events and hospitality industries for many years, our team members agree that The Garden Venue is one of the best corporate event spaces in Johannesburg. Boasting well-appointed conference and meeting rooms, complete with multiple outdoor spaces, we can host events both small and large.

Our intimate Bamboo Boardroom can comfortably accommodate up to 10 delegates while a wide selection of indoor venues can accommodate much bigger groups. The Garden Arena, our largest hall, is able to facilitate up to 450 delegates. Full-day and half-day conference packages are available, as well as overnight hotel accommodation packages.



CORPORATE EVENTS CENTRE

- The Garden Arena - up to 450 delegates
- The Forest Hall - up to 350 delegates
- The Fever Tree - up to 144 delegates
- The Elephant Hall - up to 140 delegates
- The Zanzibar - up to 96 delegates
- The Olive Tree Hide - up to 80 delegates
- The Pepper Tree - up to 72 delegates
- The Peacock Room - up to 60 delegates
- The Garden Courtyard - up to 30 delegates
- The Makhulu Boardroom - up to 20 delegates
- The Palm Boardroom - up to 14 delegates
- The Bamboo Boardroom - up to 10 delegates







TEAM BUILDING

The Garden Venue is ideal for team building activities and training purposes. Our facilities include stunning indoor and outdoor spaces, superb function halls and unique breakaway areas. Rolling lawns offer ample space for various types of collaborative activities used to enhance social relations and define roles within corporate teams.

While some companies simply require venues to host their activities, others would like to combine conference-style training sessions with experiences and entertainment. At The Garden Venue you can do either or both.

We offer the following innovative team-building activities for corporates:

Physical Activities

1. Indiana Jones Challenge
2. CSI Challenge
3. Field Olympics
4. Amazing Race

Culinary Experiences

1. Cocktail Making Challenge
2. Beer or Wine Tasting
3. Potjie Kos Wars

Brain Games

1. Lego Replication Challenge
2. Minute To Win It
3. Bomb Squad Escape Challenge

Creative Encounters

1. Virtual Reality Challenge
2. Big Picture Art Challenge
3. Film Making Challenge

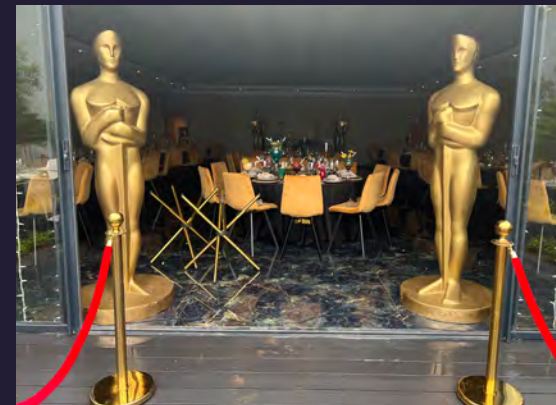
Lawn Games

1. Giant Jenga
2. Frisbie Golf
3. Boule
4. Croquet
5. Memory Game
6. Giant Pick up sticks
7. Giant Puzzle



Our experienced coordinators can assist from the initial planning stages right through to the successful execution of your event. The variety of function rooms to choose from – coupled with our unique garden breakaway spaces enriched by expansive koi ponds and decks – make The Garden Venue remarkably flexible for accommodating almost any team building, conference, year-end function or corporate event.





YEAR-END FUNCTIONS

Looking to throw the best year-end function in Johannesburg? Our venue is the quintessential destination for banishing the year's accumulated stress and forgetting about deadlines and meetings. Here you can relish breakfast, lunch or dinner and clink cocktails on teak decks cantilevering over magical koi ponds – all surrounded by awe-inspiring gardens with unforgettable views and sunsets. What better place to bond with colleagues over a couple of much-anticipated cold ones? After all, nothing truly says 'thanks for all the hard work' more than a good party!

There are multiple rooms and spaces on offer, complete with unique services and packages for your year-end event needs. Be it a casual or formal affair you wish to throw, our event specialists can help with the planning and they take pleasure in presenting solutions that will fulfil your unique year-end requirements. Your event, no matter how big or small, is important to us and we would like to make it as memorable as possible – whether it is a spitbraai, buffet lunch or a sublime multicourse banquet.

Our ability to bring the beauty of nature inside really differentiates us from other year-end function venues in Johannesburg.

A Choice of Themes:

- Afrochic Inspired
- Havana / Cuba Sunsets
- Hawaiian Beach Party
- Black & White Gala
- Night of the Stars
- Picnic Event
- Vegas Nights / Casino Royale
- Spring Colourful
- Coachella / Music Festival
- Shebeen or Sophiatown





CORPORATE EVENTS

In addition to conferencing, team building and year end functions we also host a wide variety of corporate events and functions:

- Conferences
- Year-End Functions
- Corporate Parties
- Team Building
- Networking Events
- Workshops
- Gala Banquets
- Strategy Sessions
- Exhibitions
- Board meetings
- Awards Ceremonies
- Executive Retreats
- Corporate Family Days

Be it your clients, employees, suppliers or stakeholders you hope to impress, The Garden Venue's team of event experts will take it from the initial planning and conceptualisation phases through to the final execution on the day. With years of corporate client experience on our side, we will ensure that it all comes together flawlessly, taking each aspect into consideration – including décor and culinary requirements.





THE GARDEN VENUE HOTEL

In a tranquil setting with fantastic garden views, the exclusive rooms combine classic style with contemporary flair. Being a boutique hotel, each room enjoys a different design element.

Double and single en suite rooms are available. Guests can choose between either a deluxe or standard room with king, queen and twin bed options.

Wi-Fi is complimentary and all rooms include coffee stations.

www.thegardenvenue.co.za



CORPORATE EVENTS CENTRES

The Garden Arena – up to 450 delegates

The Garden Arena is our largest corporate space. Set in a grand, landscaped garden with sprawling lawns, it is ideal for those who are planning a big event. Three distinct landmarks punctuate The Garden Arena. On the far end we have The Garden Arena Hall, then The Garden Arena Cascades Pavilion cantilevering over a koi pond and lastly the outdoor Garden Arena Bar. All three spaces fit together seamlessly, catering for welcome drinks and canapés, sumptuous lunches or dinners in the banquet hall and drinks in the bar area. Events can be held in The Arena Hall, under the open skies or under a marquee or Bedouin tent. A highly versatile space, it allows for almost any corporate event to play out, especially conferences, team building experiences and year-end parties.

The Forest Banquet Hall – up to 350 delegates

This phenomenal venue, nestled below towering trees with expansive rolling lawns, lends itself perfectly to the chemistry required for a successful business event. Pre-drinks and canapés can be enjoyed on The Piazza. Thereafter, delegates can meander to our seemingly floating Lily Pond Pavilion which cantilevers over cascading Koi ponds. Finally, mouthwatering banquets can be served inside the Forest Banquet Hall with its noteworthy high thatch roof. The Lily Pond Pavilion with its eucalyptus forest backdrop has an amphitheatre-style design with three terraces to facilitate viewing of speakers, entertainment or whatever the corporate event, conference, year-end party or team building has lined up. The Forest Banquet hall can accommodate from 150 to 350 guests, banquet style, while The Lily Pond Pavilion can seat up to 500 guests, cinema style.

The Fever Tree – up to 150 delegates

The Fever Tree venue is an elegant function hall. A gorgeously tiled entrance leads you to the private garden atrium. It is in this striking arrival area that your delegates will be welcomed to your business function. Towering fever and feather duster trees frame both the deck and cascading waterfalls, instilling a sense of calm. The function hall's elegant black and green marble floor is perfectly matched by the light cloud mirage on the ceiling. It is a grand function hall, boasting dramatic styling yet remaining neutral, opening the space up to a variety of corporate events including conferences, awards ceremonies, team building and year-end functions.



The Elephant Hall – up to 140 delegates

The Elephant Hall, benefitting from a neutral colour palette and light marble tile floors, is sufficiently versatile for any corporate event. A thatch hall with expansive patios, it revels in spectacular garden and pond views for conferences and year-end parties to remember. Businesses who use The Elephant Hall will typically host their pre-events on the majestic Koi Pond Pavilion, an exquisite outdoor space with decking pavilions cantilevering over koi ponds. This space is also a great team building and breakaway area.



The Zanzibar – up to 100 delegates

The Zanzibar Room aims to give our delegates a taste of Africa and the exotic Indian Ocean Spice Islands with their rich history. Soothing waterfalls at the entrance of this alluring corporate event hall serve as the main focal point in the idyllic landscape reminiscent of the tropics. Meandering paths leading to decks built over water, an outdoor tiki bar and an abundance of plants all play their part in your guests' journey. As a markedly secluded function hall, characterised by natural earthy palettes, it is ready for a variety of events such as conferences, private parties, year-end functions and even incentive programmes.



The Olive Tree Hide – up to 80 delegates

This outdoor thatch venue is in an enviable position, nestled under a grand old indigenous olive tree. Situated at the far end of The Lawn Terrace, it is an intimate corporate function space with lovely marble tiling well suited to conferences, team building activities and year-end parties. The previously mentioned terrace, which is adjacent to The Olive Tree Hide, is a sublime garden location for a corporate team building activity and a welcoming breakaway area. Overall, rolling lawns and immaculately landscaped greenery define this beautiful environment.





The Pepper Tree – up to 75 delegates

Versatile enough for any type of corporate event, this modern room exudes lavish luxury. True to its name, the aesthetically pleasing hall has been designed around an impressive pepper tree. A wooden deck leads from the hall, revelling in the tree's shade, while cantilevering over the stream that meanders through the private garden to the firepit boma – the perfect breakaway space. A few moments of serenity are accessible, as are ample opportunities to socialise in picturesque areas. Corporate events such as banquets, product launches and even networking events would fare well here.

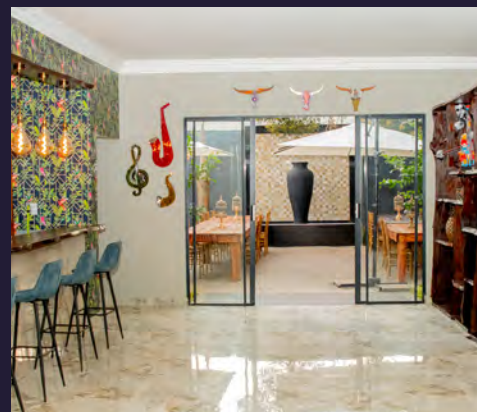
The Peacock Room – up to 70 delegates

The Peacock Room's contemporary architecture distinctly contrasts the dominant traditional thatch that typifies The Garden Venue. The interior is airy and light with neutral colour palettes, allowing the function space to transform effortlessly in line with your desired corporate theme. Punctuated by a mosaic buffet serving station and a separate lounge and bar, it makes for an impressive business event venue. As always, it is all about the gardens and as such generous windows frame the magnificent views over The Lawn Terrace. Welcome drinks and canapés are typically served at the entrance of The Weir Cascade.



The Garden Courtyard – up to 30 delegates

The Garden Courtyard, a splendidly landscaped outdoor space, is wonderful for corporate garden parties including breakfasts, lunches and dinners. It is also the ultimate breakaway space that encourages collaboration and teamwork. The designer gardens flaunt an informal tropical design with tall palms and an abundance of colourful flowers. If your team needs to get out of their air-conditioned offices, this function space is the perfect diversion.



The Garden Courtyard consists of three spaces:

1. The Protea Garden – Seats Up to 30 Delegates
2. The Rose Garden – Seats Up to 30 Delegates
3. The Cherry Blossom Garden – Seats Up to 30 Delegates

The Makhulu Boardroom – up to 20 delegates

With its dazzling water wall and marvellous marble tiles, the modern Makhulu Boardroom is a strong contender for our most extravagant corporate space. Uniquely beautiful and exceptionally personal, this room proudly presents a 6-metre long boardroom table and indulgently comfortable chairs. Contemporary art and a choice selection of exclusive wines frame an extra-large television for presentations. The Makhulu Boardroom is a terrific option for a multitude of corporate events including strategy sessions and brand meetings.



The Palm Boardroom – up to 14 delegates

Our Palm Boardroom is calm and cool, perfect for inspiring creativity and motivating your team. The gorgeous décor is contemporary, celebrating a strong minimalist design, all elevated by the most captivating wall art. The boardroom shares views of the gardens and cascades, making it a particularly pleasant space for hosting board meetings, forums, presentations, workshops and training sessions for smaller groups.



The Bamboo Boardroom – up to 10 delegates

The Bamboo Boardroom was designed with small business events in mind. It is the most intimate of our corporate spaces, tastefully decorated with soothing colour palettes and a dramatic bamboo forest wall backdrop. Ultra-comfortable chairs, opulent décor and stylish marble floors make it an attractive space for all-day meetings, overlooking a tranquil garden scene. The room is superb for a variety of corporate occasions including board meetings, strategy retreats and breakfast briefings.





THE GARDEN VENUE

CORPORATE EVENTS

308 Boundary Road, North Riding AH, Randburg, 2169 | info@thegardenvenue.co.za | +27 (0)11 795 0000

www.thegardenvenue.co.za



CORPORATE EVENTS | WEDDINGS | PARTIES | HOTEL